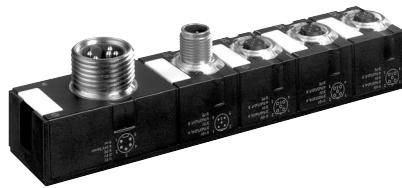


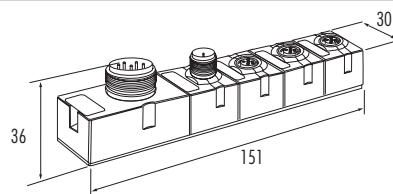
## Repeater Profibus

## R-P M12

Protection IP67



Ordering data		Art.-No. 56960
<b>Field bus</b>		
Nominal voltage	24 V DC (18...30.2 V), to EN61131-2	
Module supply	via PIN 4 sensor supply (7/8" power)	
Current usage	approx. 80 mA	
Type	Profibus-DP slave	
Transfer protocol	Profibus-DP	
Operating modes	sync- and freeze-mode is supported	
Transfer rate	up to 12 MBit/s	
<b>LED indicator</b>		
Communication to field bus	green static = O.K.; green blinking = no communication red = configuration error	
Sensor supply $U_s$	green = O.K.; red = $U < 18$ V	
Actuator supply $U_a$	green = O.K.; red = $U < 18$ V	
Internal communication $U_i$	static = O.K.; blinking = no data transfer	
<b>Supply voltage</b>		
Sensor supply	via 7/8" power; max. 9 A	
Actuator supply	via 7/8" power; max. 9 A	
Bridge internal system connection	each female having a max. of 4 A per PIN	
<b>General data</b>		
Temperature range	0...+ 55 °C (storage temperature - 20...+ 75 °C)	
Mounting method	2-hole screw mounting	
Dimension	36 x 151 x 30 mm	
<b>Dimension drawing</b>		



Notes	
Contact layout and drill plan see page 2.5.5. Connection cables can be found in chapter 1.4... All housings are fully potted.	

Bus connector

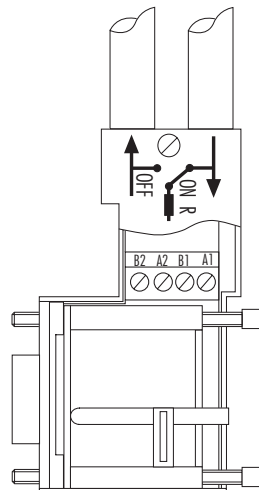
Profibus-DP

CAN

Protection IP20



Ordering data		Art.-No.	Art.-No.
Profibus-DP		<b>55762</b>	
Profibus-DP incl. 2 PG interface		<b>55766</b>	
CAN			<b>55760</b>
Technical data			
Supply voltage	via field bus slave; 4.75...5.25 V DC		
Current usage	≤ 5 mA		
Transfer rate	12 MBits/s	1 MBits/s	
Terminator	integrated and switchable		
Interface			
Field bus	SUB-D 9-pole male	SUB-D 9-pole female	
Data cable	4-row terminals for wire diameters up to 1.5 mm <sup>2</sup>		
Cable exit	2 options, axial or 90° to the plug		
General data			
Temperature range	0...+55 °C		
Dimension	64 x 17 x 40 mm	65 x 16 x 48 mm	
Connection diagram			

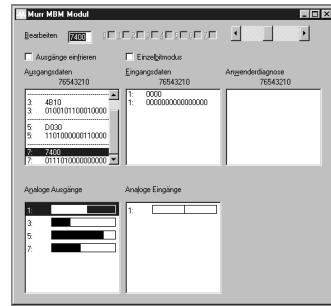


Notes

Accessories

## Profibus-DP

### Profibus master simulator



### Profibus tester PBT2



Ordering data	Art.-No.	Art.-No.
Profibus master simulator	55808	
Profibus tester PBT2		55807
Areas of use	function check of bus module and wiring	set-up, maintenance, production control of Profibus-DP, Profibus-FMS members
Requirements	PC IBM compatible from 80386 MS Windows 3.1, MS Windows 95, MS Windows 98, MS Windows NT	PC IBM compatible from 80386, disc drive 3.5" MS Windows 95B, MS Windows 98, MS Windows NT 4.0
Connection	via serial interface (RS232)	—
Function	configuration and parameterization of Profibus slaves indication of the input data and "forcing" the output data indication of the diagnostic data in clear text (when described in GSD file) indication of the analog MBM inputs through bar graphs adjusting the analog MBM outputs via software slider	test and evaluation of the signal conditions indication of the differential voltage of 0.6 V...4.2 A galvanic separated trigger-outlet for oscilloscope (BNC socket) the measured glitches (over- or undershoot) the to flat increasing flanks the low signal levels
Delivery content	software package cable and Profibus converter	2 discs 3.5" supply unit Profibus adapter cable null-modem cable instruction guide robust plastic case

### Notes

## Profibus-DP

### Profibus Cable tester

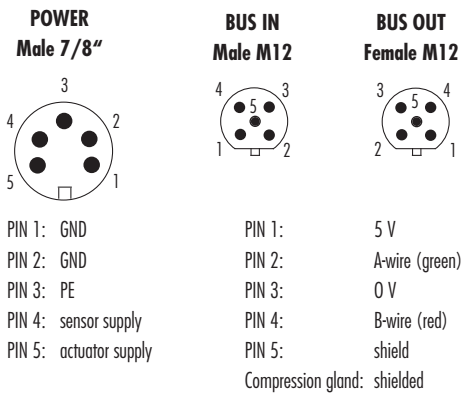


### Profibus Nettest II



Ordering data	Art.-No. 55804	Art.-No. 55820
<b>Areas of use</b>	quick check of the bus cable, disturbing factors in the Profibus	quick check of the bus physics after wiring
<b>Connection</b>	Profibus-DP (RS485)	
<b>Function</b>	baud rate	via short-circuit in the bus cable
insight about	reflections (LED)	cable or shield break
	terminators	exchanged cables
		terminators (No. of/position)
		open-ended wires
		cable length
		spot cable
		baud rate
		Profibus slaves in mains
		participant selective bus level
		reflections
<b>DP-mono-master function</b>	-	visualisation and modification I/O data (I/O check) without PLC
	-	detailed information of diagnostic alarm
	-	implementation of Profibus service
<b>Delivery content</b>	Profibus cable tester	NETTEST II complete set in suitcase
	required battery (9 V block)	inclusive loading station and cable adapter
<b>Notes</b>		

## Contact layout for Profibus repeater



## Drill plan Profibus repeater

