

Bus modules MVK metal Profibus-DP

Input/output module

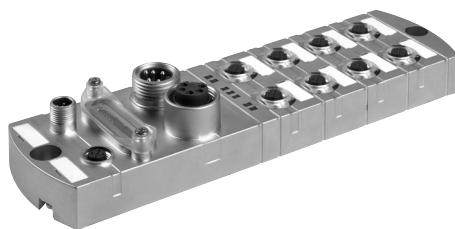
Protection IP67



MVK

Approvals

MVK-MP



Ordering data

	Art.-No.
8 DI + 8 x diagnostic/ DI	55307
8 DI/DO + 8 x diagnostic/ DI	55308
8 DI/DO + 8 x diagnostic/ DI/DO	55309

Field bus

Supply voltage	24 V DC (18...30.2 V), to EN61131-2
Type	Profibus-DP slave
Transfer protocol	Profibus-DP to EN50170
Operating modes	sync- and freeze-mode are supported
Transfer rate	up to 12 MBit/s

Inputs

Type	for 3-wire sensors or mechanical switches, p-switching, IEC-1131-2 type 2 compatible
Supply voltage	24 V DC (18...30.2 V), to EN61131-2, $I_{total} \leq 200$ mA per M12 port
Status indicator	1 yellow LED per input

Outputs

Supply voltage	24 V DC (18...30.2 V), to EN61131-2, $I_{total} \leq 9$ A
Switching current per output	1.6 A, short-circuit and overload protected
Filament lamp load	10 W
Max. switching frequency	resistive load: 50 Hz; inductive load: 20 Hz
Status indicator	1 yellow LED per output

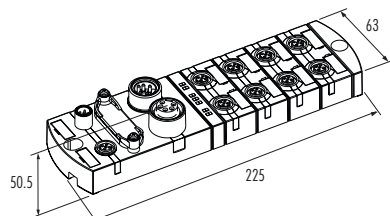
Diagnostic

Field bus	RUN-LED
Under voltage	combined LED and alarm to the master
Short-circuit sensor/actuator	2 red LEDs per channel to M12 port
Diagnostic to DESINA® (PIN 2)	PIN-2 diagnostic with 1 red LED per M12 port and signal to master; individually parameterized as digital input see technical data

General data

Temperature range	0...+55 °C (storage temperature -20...+70 °C)
Mounting method	2-hole screw mounting
Dimensions	225 x 63 x 50.5 mm (drill plan 208.5 ± 0.5 mm)

Dimension drawing



Notes

Contact layout from page 2.2.10. Further accessories from page 2.2.13. Connection cables can be found in chapter 1.4...

Bus modules MVK metal DeviceNet

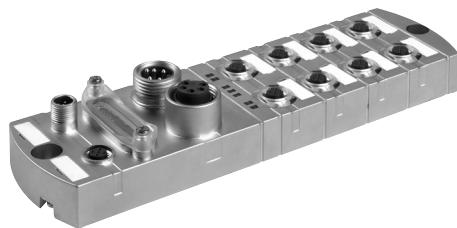
Input/output module

Protection IP67

DeviceNet
CONFORMANCE TESTED

Approvals 

MVK-MDN



Ordering data	Art.-No.
8 DI + 8 x diagnostic/ DI	55297
4 DI 4 DO + 8 x diagnostic/ DI	55298
8 DI/DO + 8 x diagnostic/ DI/DO	55299

Field bus	
Supply voltage	24 V DC (18...30.2 V), to EN61131-2
Type	prod. type 7; generic I/O module
Transfer protocol	CAN; layer 7 DeviceNet (ODVA conformance tested)
Operating modes	polling; change of state; cyclic
Transfer rate	125 kBit/s; 250 kBit/s; 500 kBit/s
Bus connector	micro connector (M12 connector)

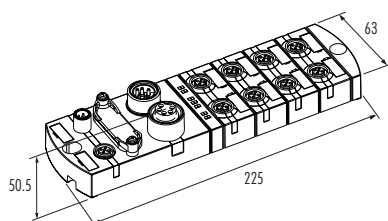
Inputs	
Type	for 3-wire sensors or mechanical switches, p-switching, IEC-1131-2 type 2 compatible
Supply voltage	24 V DC (18...30.2 V), to EN61131-2, ≤ 200 mA per M12 port
Status indicator	1 yellow LED per input

Outputs	
Supply voltage	24 V DC (18...30.2 V), to EN61131-2, I-total ≤ 9 A
Switching current per output	1.6 A, short-circuit and overload protected
Filament lamp load	10 W
Max. switching frequency	resistive load: 50 Hz; inductive load: 20 Hz
Status indicator	1 yellow LED per output

Diagnostic	
Field bus	MS-LED, NS-LED
Under voltage	combined LED and alarm to the master
Short-circuit sensor/actuator	2 red LED per channel to M12 port
Diagnostic to DESINA® (PIN 2)	PIN-2 diagnostic with 1 red LED per M12 port and signal to master; individually parameterized as digital input see technical data

General data	
Temperature range	0...+55 °C (storage temperature -20...+70 °C)
Mounting method	2-hole screw mounting
Dimensions	225 x 63 x 50.5 mm (drill plan 208.5 ± 0.5 mm)

Dimension drawing



Notes
Contact layout from page 2.2.10. Further accessories from page 2.2.13. Connection cables can be found in chapter 1.4...

Bus modules MVK
Interbus

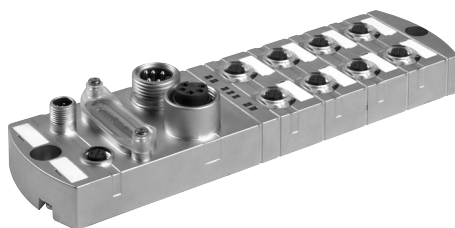
Input/output module

Protection IP67



Approvals 

MVK-MI



Ordering data		Art.-No.
8 DI	+ 8 x diagnostic/ DI	55294
8 DI/DO	+ 8 x diagnostic/ DI	55295
8 DI/DO	+ 8 x diagnostic/ DI/DO	55296

Field bus	
Supply voltage	24 V DC (18...30.2 V), to EN61131-2
Type	remote bus/installations remote bus participants (slave)
Transfer protocol	Interbus to DIN EN 50254
Transfer rate	500 kBit/s

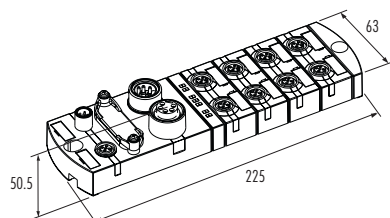
Inputs	
Type	for 3-wire sensors or mechanical switches, p-switching, IEC-1131-2 type 2 compatible
Supply voltage	24 V DC (18...30.2 V), to EN61131-2, ≤ 200 mA per M12 port
Status indicator	1 yellow LED per input

Outputs	
Supply voltage	24 V DC (18...30.2 V), to EN61131-2, $I_{\text{total}} \leq 9$ A
Switching current per output	1.6 A, short-circuit and overload protected
Filament lamp load	10 W
Max. switching frequency	resistive load: 50 Hz; inductive load: 20 Hz
Status indicator	1 yellow LED per output

Diagnostic	
Field bus	BA-, RD-, RC-LEDs
Under voltage	combined LED and alarm to the master
Short-circuit sensor/actuator	red LED per channel to M12 port
Diagnostic to DESINA® (PIN 2)	PIN-2 diagnostic with 1 red LED per M12 port and signal to master; individually parameterized as digital input see technical data

General data	
Temperature range	0...+55 °C (storage temperature -20...+70 °C)
Mounting method	2-hole screw mounting
Dimensions	225 x 63 x 50.5 mm (drill plan 208.5 ± 0.5 mm)

Dimension drawing



Notes	
Contact layout from page 2.2.10. Further accessories from page 2.2.13. Connection cables can be found in chapter 1.4...	