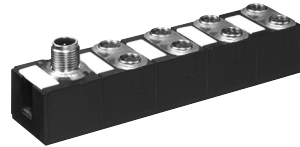


**I/O modules**  
**Inputs**  
**via M8 round plug connector**

**Protection IP68/69K**

**MASI68 DI8/0.2A AB 8xM8**

8 inputs 0.2 A; AB-Slave



**Ordering data**

**Art.-No.**

**56420**

**Technical data**

AS-Interface bus voltage	26.5...31.6 V
Combined current usage	max. 250 mA
Addressing	via master or M12 connection and programming device, pre-adjusted to address 0
Address range	2 x 1...62 (2 x 1...31 A or B)
Profile /IO/ID/ID2)	2 x S-0.A.0

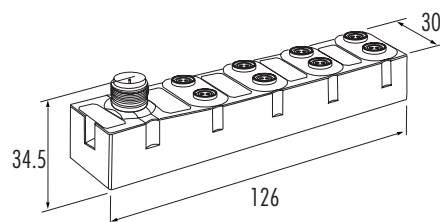
**Inputs**

Number of	8
Type	for 3-wire sensors, pnp-switched or for mechanical switches
Input guideline	EN 61131-2, electrical short-circuit and overload protection/pnp-3-wire sensors
Sensor supply	≤ 200 mA from the AS-Interface, short-circuit and overload protection
Short-circuit protection	electronic
LED indicator	1 yellow LED per input

**General data**

Supply temperature range	-20...60 °C
Storage temperature range	-40...80 °C
Mounting method	screw fixing
Dimensions	34.5 x 126 x 30 mm
Weight	approx. 130 g

**Dimension drawing**



**Accessories**

M8 blind plug	1 piece
---------------	---------

**Art.-No.**

**3858627**

**Notes**

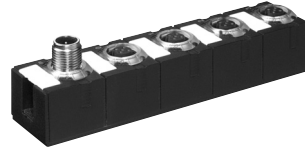
Accessories see chapter 2.10. Connection cable can be found in chapter 1.

**I/O modules  
via M12 round plug connector**

**Protection IP68/69K**

**MASI68 DI4/0.2A AB 4xM12**

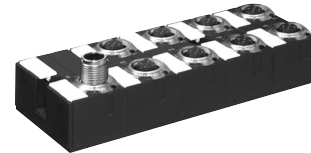
4 inputs 0.2 A; AB-Slave



**MASI68 DI4/0.2A DO4/2A 8xM12**

4 inputs 0.2 A

4 outputs 2 A



Ordering data	Art.-No. 56421	Art.-No. 56422
<b>Technical data</b>		
AS-Interface bus voltage	26.5...31.6 V	
Combined current usage	max. 250 mA	
Addressing	via master or M12 connection and programming device, pre-adjusted to address 0	
Address range	1...62 (1...31 A or B)	1...31
Profile /I0/ID/ID2)	S-0.A.0	S-7-F.0
<b>Inputs</b>		
Number of	4	4
Type	for 3-wire sensors, pnp-switched or for mechanical switches	
Input guideline	EN 61131-2, electrical short-circuit and overload protection/pnp-3-wire sensors	
Sensor supply	≤ 200 mA from the AS-Interface, short-circuit and overload protection	
Short-circuit protection	electronic	
LED indicator	1 yellow LED per input	
<b>Outputs</b>		
Number of	–	4
Supply voltage	–	ext. 24 V DC to DIN 19240, via M12 connection
Current usage per output	–	2 A, 100 %
Combined current	–	4 A
Short-circuit protection	–	electronic, short-circuit and overload protected
Filament lamp load	–	10 W
Max. switching frequency	–	resistive load: 100 Hz; inductive load: 1 Hz
LED indicator	–	LED yellow per output
<b>Diagnostics</b>		
AS-Interface supply	flashing green LED codes to specification 2.11	
<b>General data</b>		
Supply temperature range	-20...60 °C	
Storage temperature range	-40...80 °C	
Mounting method	screw fixing	
Dimensions	34.5 x 126 x 30 mm	34.5 x 126 x 50 mm
Weight	approx. 130 g	approx. 210 g
<b>Dimension drawing</b>		
<b>Accessories</b>		
M12 blind plug	(1 set) 4 pieces	Art.-No. 55468
<b>Notes</b>		
Accessories see chapter 2.10. Connection cable can be found in chapter 1.		

MASI68