

System components

MASI Repeater

Protection IP67



Ordering data

Art.-No.
55670

Technical data

Current usage	45 mA per segment, 90 mA overall
Supply voltage	18.5...31.6 V DC galvanical separation between segment 1 and 2
Bus extension	100 m (max. 2 repeater)
Supply voltage	via AS-Interfacebus

Indicator

green LED	per segment
-----------	-------------

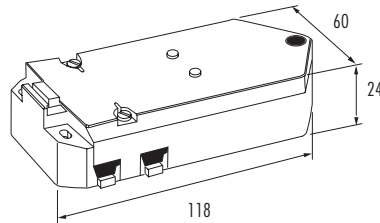
Time response

Signal running time in the repeater	6 μ s per telegram and per transmitter direction, 12 μ s overall per telegram
-------------------------------------	---------------------------------------------------------------------------------------

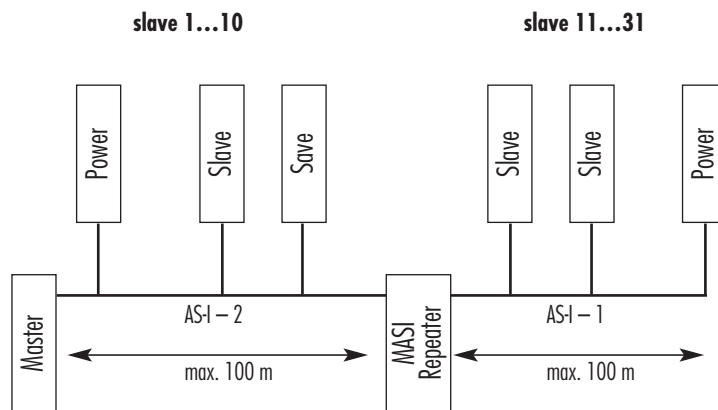
General data

Housing	plastic
Mounting method	AS-Interface ribbon cable – penetration technology
Temperature range	0...+55 °C
Mounting method	screw fixing
Dimensions	24 x 118 x 60 mm
Weight	170 g

Dimension drawing



Circuit diagram



Note

MASI67

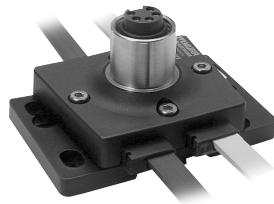
Installation technology

Protection IP67

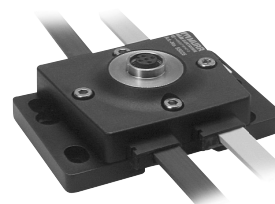
MASI67 Converter

MASI67 Converter

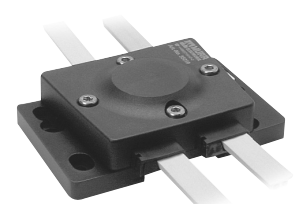
MASI67 Converter or connector



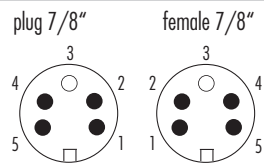
representative illustration - female



representative illustration - female

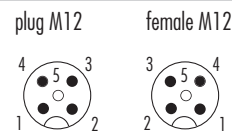


Pin configuration



Pin configuration

- Pin 1: AS-Interface + (brown)
- Pin 2: AS-Interface - (blue)
- Pin 3: N/C
- Pin 4: + 24 V (brown)
- Pin 5: 0 V (blue)



Pin configuration

- Pin 1: AS-Interface + (brown)
- Pin 2: 0 V (blue)
- Pin 3: AS-Interface - (blue)
- Pin 4: + 24 V (brown)
- Pin 5: N/C

Ordering data

	Art.-No.	Art.-No.	Art.-No.
Converter 2 x profile cable 7/8" female	55035		
Converter 2 x profile cable 7/8" male	55036		
Converter 2 x profile cable M12 female		55037	
Converter 2 x profile cable M12 male		55038	
Distributor 1 x on 3 x profile cable			55034
Connection 2 x on 2 x profile cable			55033

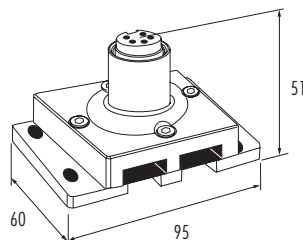
Technical data

Max. voltage	36 V DC		
Max. combined current	8 A	4 A	8 A
Isolation voltage	AS-Interface/power: 200 V		
Connection	7/8"	M12	-

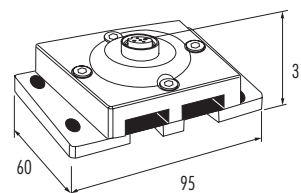
General data

Temperature range	-20...70 °C		
Protection to DIN 40050	IP67		
Mounting method	screw fixing or DIN-rail mounting to EN60715		
Dimensions (in mm)	51 x 95 x 60 (female), 46 x 95 x 60 (male)	31 x 95 x 60 (female), 40 x 95 x 60 (male)	26 x 95 x 60
Weight	110 g	90 g	65 g

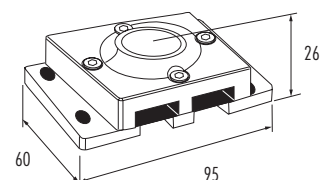
Dimension drawing



representative illustration - female



representative illustration - female



Accessories

		Art.-No.
Seal	(1 set) 2 pieces left, 2 pieces right	55061
Middle gasket	(1 set) 2 pieces	55062
Code element	(1 set) 2 pieces	55060

Note

Accessories see chapter 2.10. Connection cables can be found in chapter 1.