

The space-saving design and protection class of the products in the **MASI00** and **MASI20** product ranges make them ideal for use in switch cabinets.

The range of the well-thought-out and application-oriented products includes

- system supplies
- gateways
- I/O modules
- installation technology with interfaces for distributed peripherals

Adapting the electrical and mechanical interfaces to the products themselves plays a special part in keeping the use of tools to a minimum during assembly, therefore reducing installation times and making an overall contribution to keeping costs down.



## Greatest flexibility

- interfaces to many different higher-level field bus systems
  - automatic addressing on replacement of modules
  - convenient conversion and separation for transport
- flexible and extendable  
→ quick change of modules

## Find the errors instead of searching for them – allround diagnostic

- on-site diagnostic at the module
- detailed messages to controls (master and PLC)
- cut-off and error message to master in case of short-circuit or overload

## I/O modules



### Bus components MASI00/20

AS-Interface I/O modules with pluggable connections, integrated addressing female, DIN-rail mounting  
Protection IP20  
4 inputs  
4 outputs  
2 inputs and 2 outputs  
4 inputs and 4 outputs

from page 2.6.2

## System components



### Supply voltage

AS-Interface system components, protection IP20  
Power supply unit MCS-A 4  
Power supply unit MCS-A 4 EFD (with integrated earth fault detective)  
Power supply unit MASI-2.8

from page 2.6.5

### Gateway

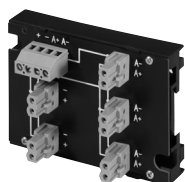
AS-Interface system components, protection IP20 for Profibus-DP

Diagnostic with graphical display, metall housing

from page 2.6.7



## Installation technology



### Accessories, AS-Interface bus and power distributor

Control panel interface for field wiring with AS-Interface flat profile cable.  
Plug connectors for easy transport separation.  
Break through technology for easy and fast cable manufacture.

from page 2.6.8